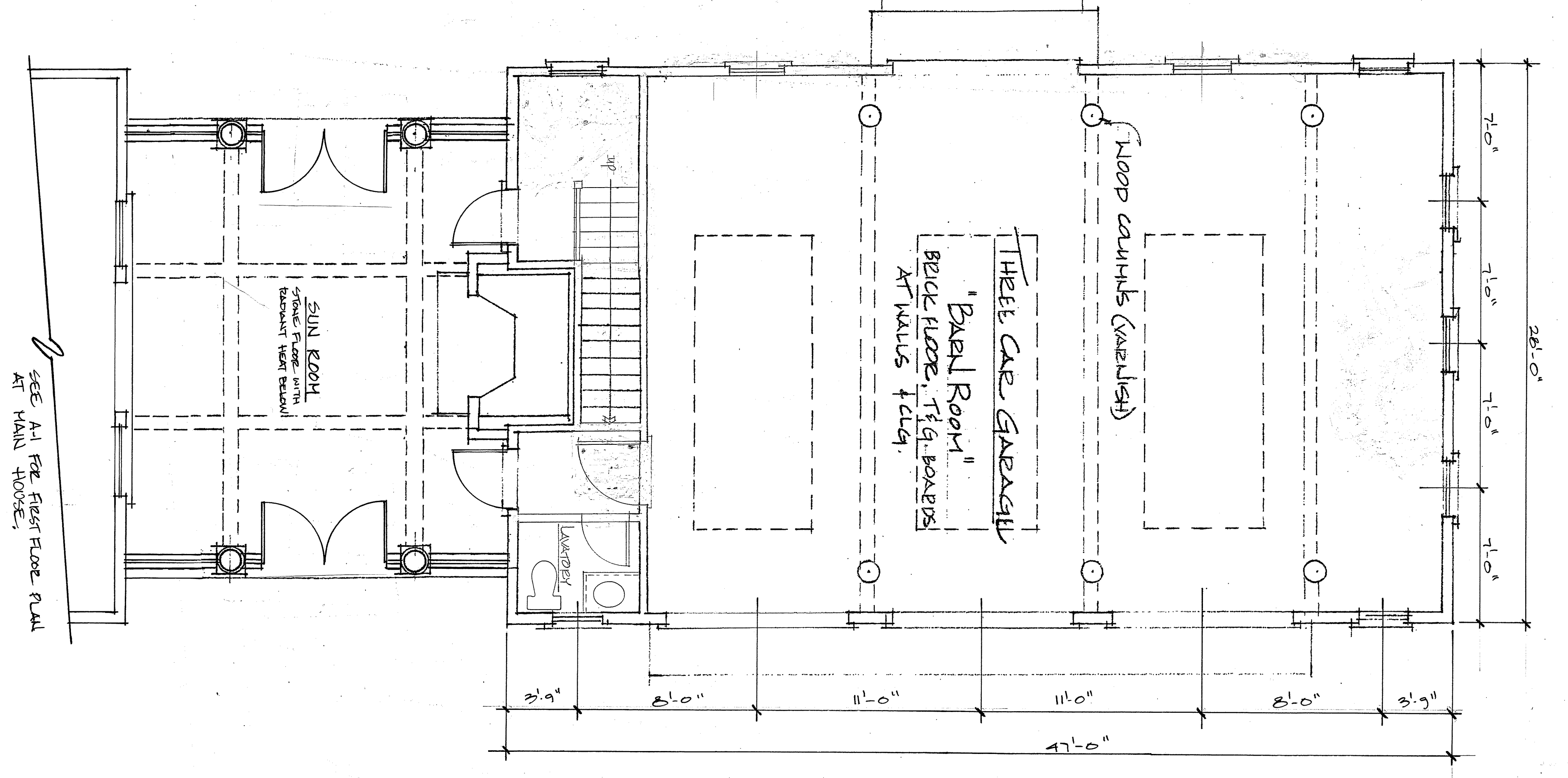


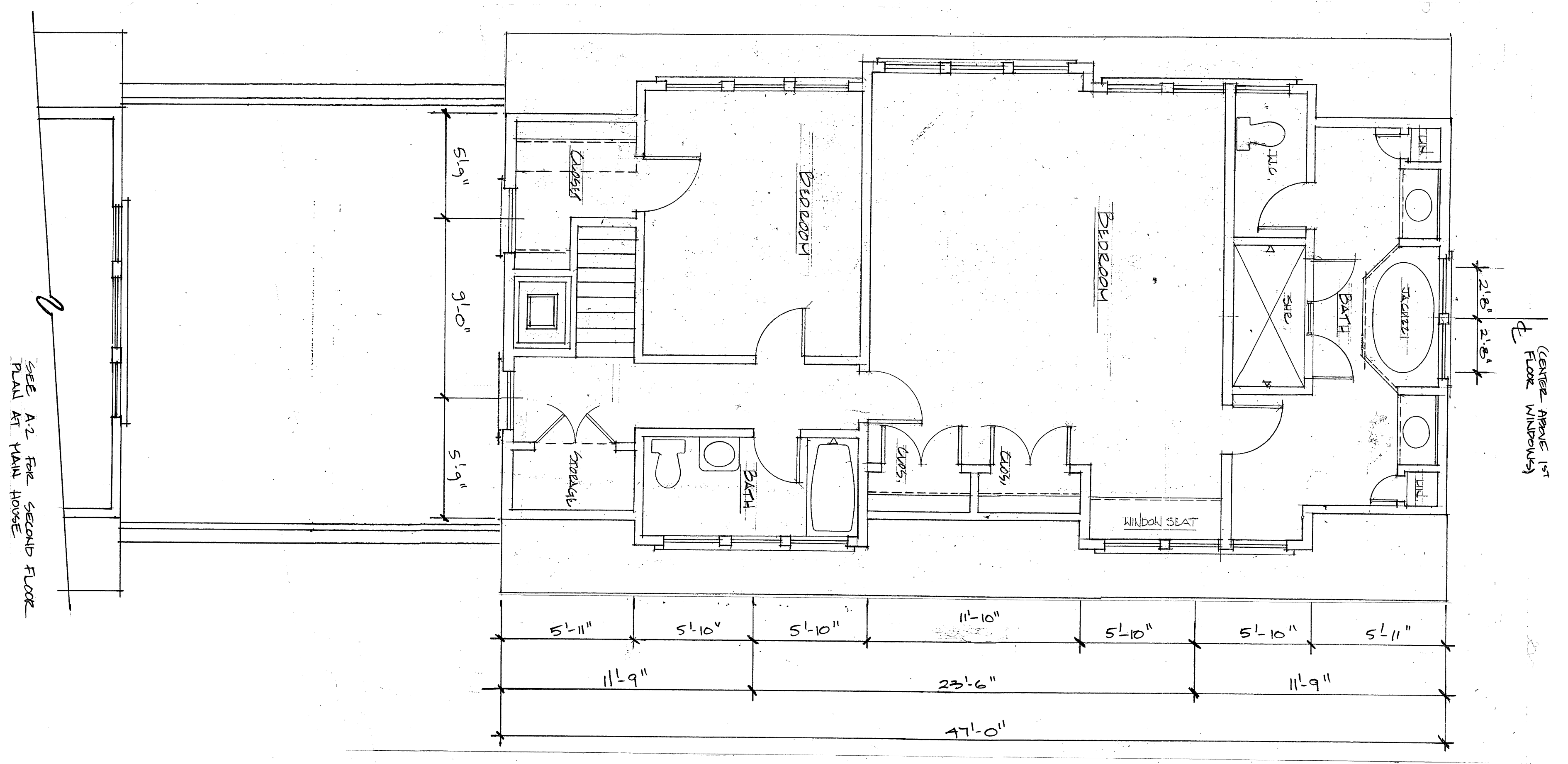
1
1/4" = 1'-0"

FIRST FLOOR PLAN AT CARRIAGE HOUSE WING



2
1/4" = 1'-0"

SECOND FLOOR PLAN AT CARRIAGE HOUSE WING



A-4

CARRIAGE HOUSE WING:
FIRST AND SECOND
FLOOR PLANS

Drawn by: TC
Checked: FA
Scale: 1/4"=1'-0"
Date: 28 OCT. 02
Proj. no.

HOUSE TO BE BUILT AT
LITCHFIELD POINT
CHAPPAQUIDDICK ISLAND
MASSACHUSETTS

Ahearn - Schopfer and Associates P.C.
160 Commonwealth Avenue
Boston, Massachusetts
02116
Architecture
Interiors
Urban Design

| Issues | Revisions |
|-------------------|-----------|
| Issue 1: 10-28-02 | Rev. 1: |
| Issue 2: 11-03 | Rev. 2: |
| Issue 3: | Rev. 3: |
| Issue 4: | Rev. 4: |
| Issue 5: | Rev. 5: |
| Issue 6: | Rev. 6: |
| Issue 7: | Rev. 7: |
| Issue 8: | Rev. 8: |